



Sarah Jackson
Realtor
 Cell (307) 267-3707
 Office (307) 473-8318
 Fax (307) 265-0024

SarahSells307.com
Facebook: @SarahSells307
SarahSells307@gmail.com

350 W. A Street Suite 100
 Casper, WY 82601

RE/MAX[®]
The Group



Each Office Independently Owned and Operated
 This information is deemed reliable but not guaranteed.



1625 Yesness Ct.

Call or Text Sarah 307-267-3707 for more information. Welcome to the Aspen! This home features an attractive exterior highlighted with an extended front covered porch and a mix of classic and modern exterior elements. This single story home comes complete with a large covered porch, 3 bedrooms, 2 baths and large common rooms within the open floor plan. There are 10 foot ceiling heights, a warming fireplace, and a three panel window wall. Enjoy hardwood flooring throughout the great room, kitchen, and dining room, granite countertops throughout, and tile in the bathrooms and laundry. The dining room features good space for family meals and there is outdoor access from the slider windows. The grand kitchen is highlighted with a massive island which features additional seating options and an abundance of work/prep space. There is a huge walk-in food storage pantry as well as additional counter and cabinet space within the kitchen. The master bedroom is spacious with a 10' tray ceiling accent and lovely window views overlooking the rear yard. The 3 car front loading garage offers plenty of vehicle space and other room for storage. This beautifully designed home features an exterior with great curb appeal, an efficient floor plan and the possibility of expansion in the unfinished basement.

Lsf
 1701/1701

3

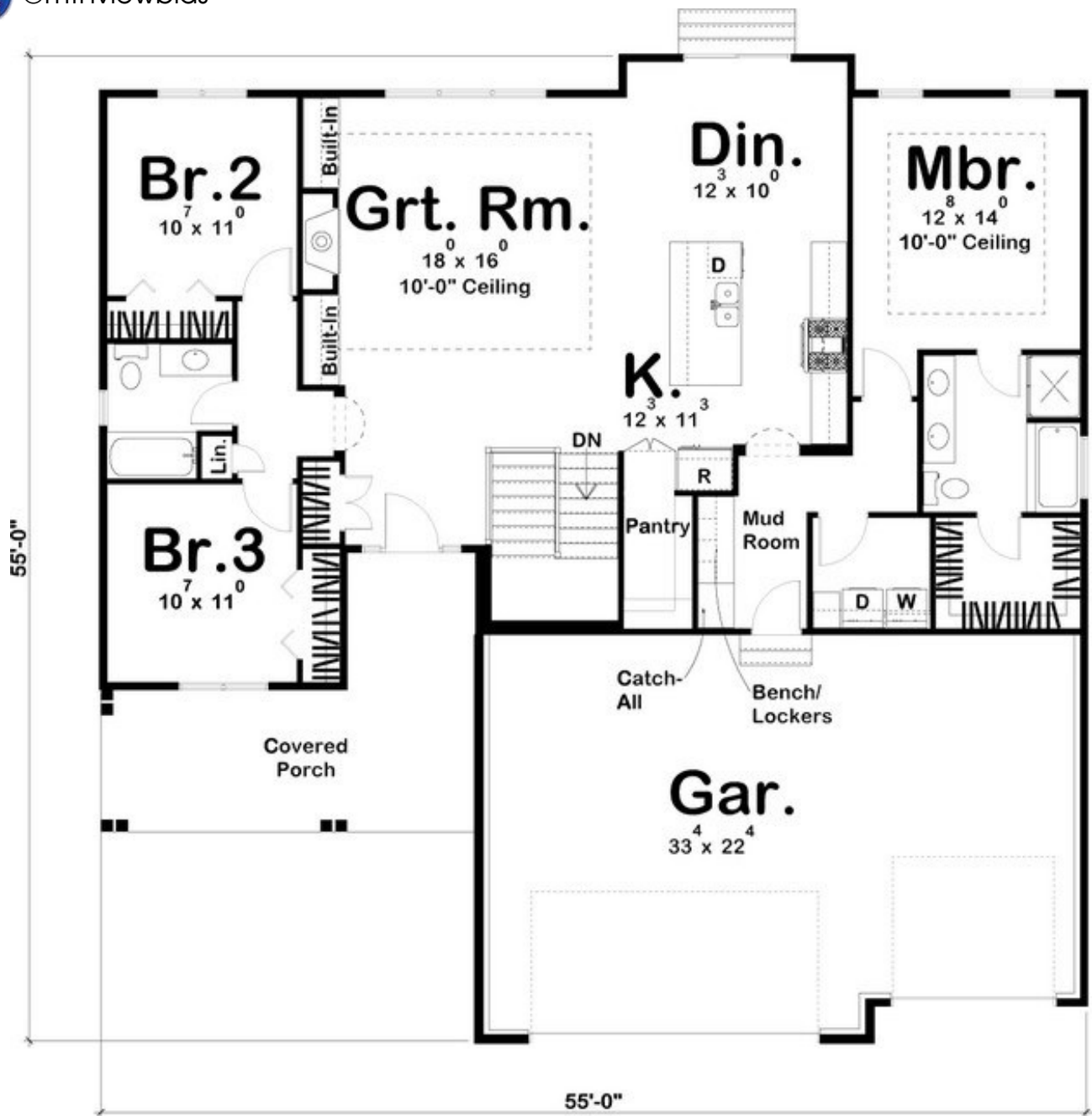
2

3 Attached

Build to Suit by Mountain View Builders Inc.
 For more information about the builder and/or floor plan options
 please visit:
www.MountainViewBuilds.com



@mtnviewblds



- ◆ **Style** Ranch
- ◆ **Beds/Baths** 3/2
- ◆ **Garage** 3-Attached
- ◆ **Sq Ft** 1701/1701
- ◆ **Year Built** 2017
- ◆ **Lot Sq Ft** 15,381
- ◆ **Heating** FA Gas/1 Gas Fireplace
- ◆ **Cooling** Central Air
- ◆ **Exterior** Stone/Steel/Stucco/Frame-Lap
- ◆ **Flooring** Hardwood/Tile/Carpet
- ◆ **Laundry** Main Level
- ◆ **Landscape** Front/Back



Listing agent is related to the seller